

How to develop integrated care

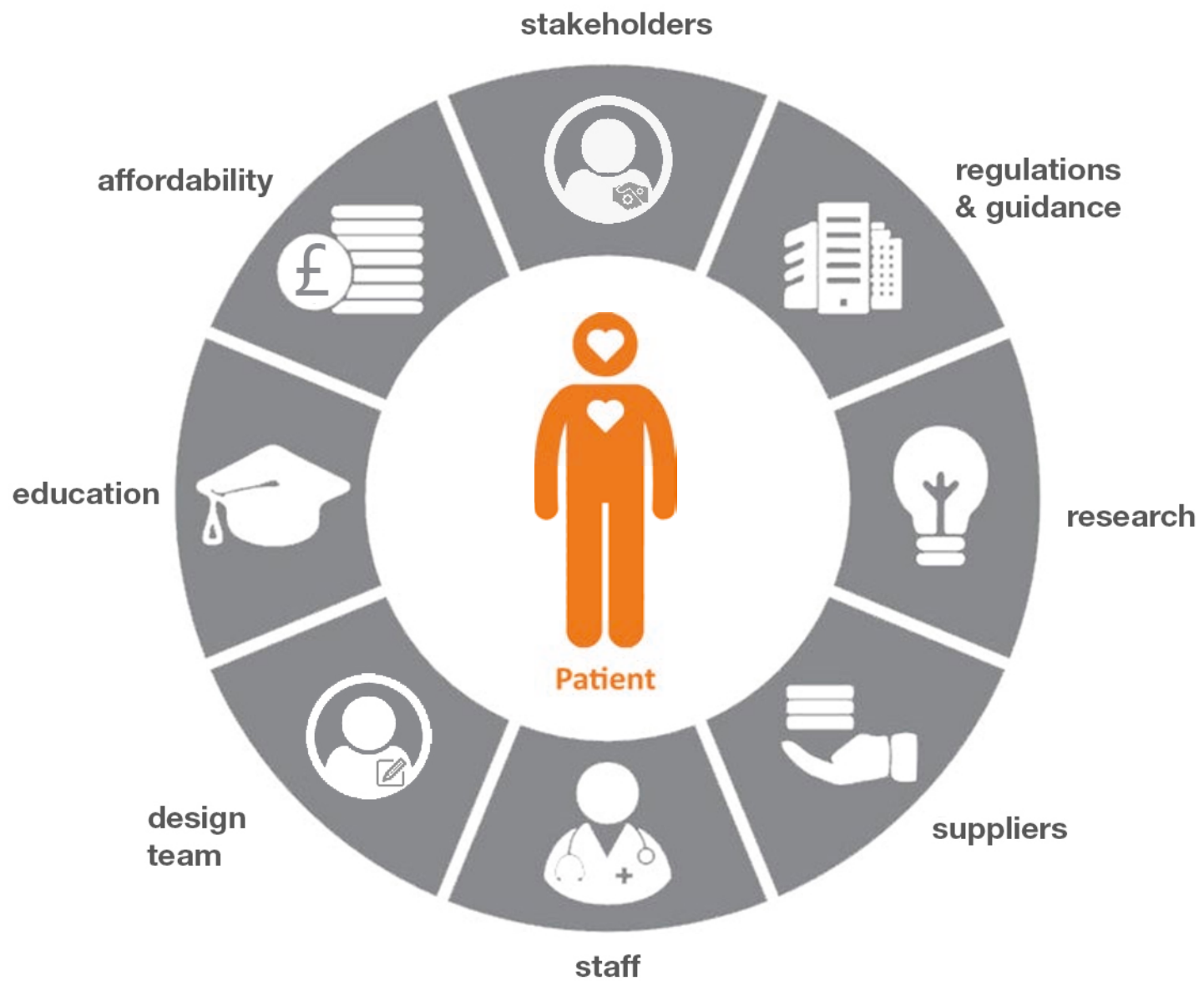
Cressida Toon

sonnemann**toon**

Suzanne MacCormick

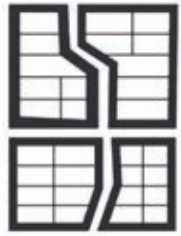












2008

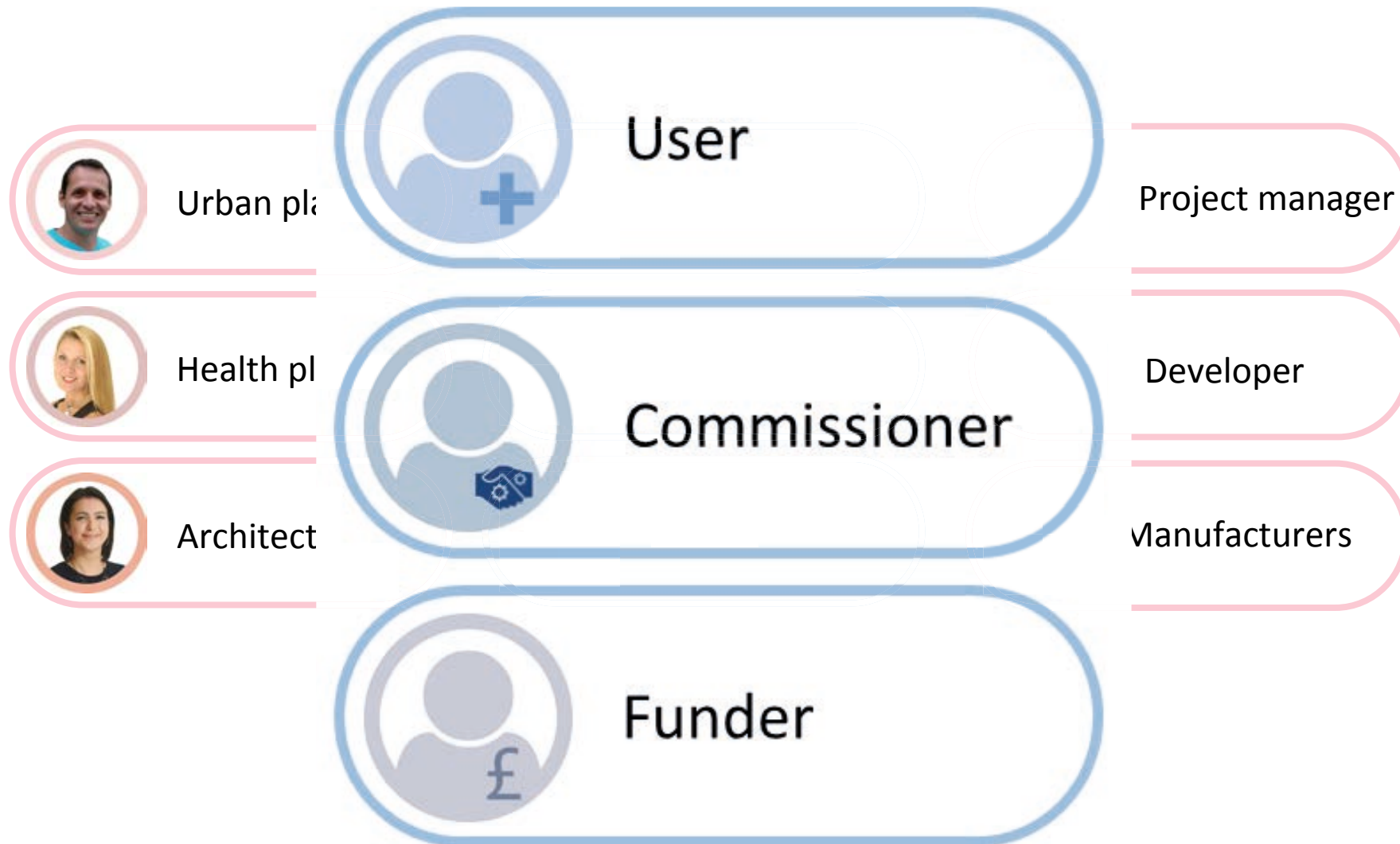



2012

2014

2018







Urban planner



User




Project manager



Health planner



Commissioner



Developer



Architect



Funder



Manufacturers

2008

1.10 Specifically, the Operating Framework clarifies:

- **the business processes:** ensuring a business-like and transparent approach to planning that supports locally led decisions, whilst

providing accountability. There is a strong emphasis on **genuine partnership working** between PCTs, local authorities and other

enterprise) to ensure that local health and wellbeing needs are better understood and addressed in partnership. Joint strategic needs assessments (JSNAs) will be vital in this context.¹ They will also provide robust information to support commissioners as they fulfil their legal duty to carry out equality impact assessments to assure themselves that services are both accessible to and appropriate for the whole community.

¹ JSNA guidance is available at: www.dh.gov.uk/en/Publicationsandstatistics/Publications/PublicationsPolicyAndGuidance/DH_081097

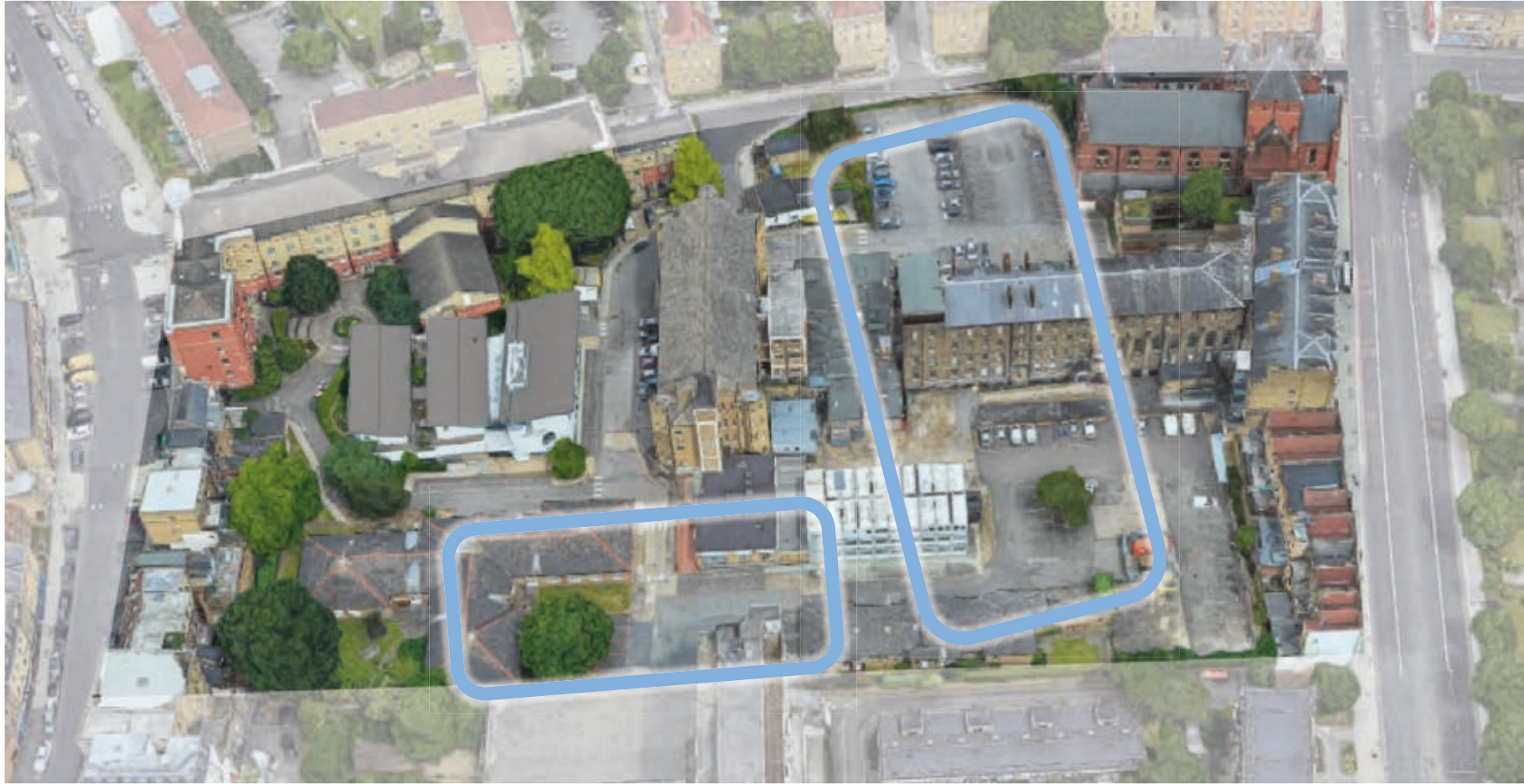
2008



2008



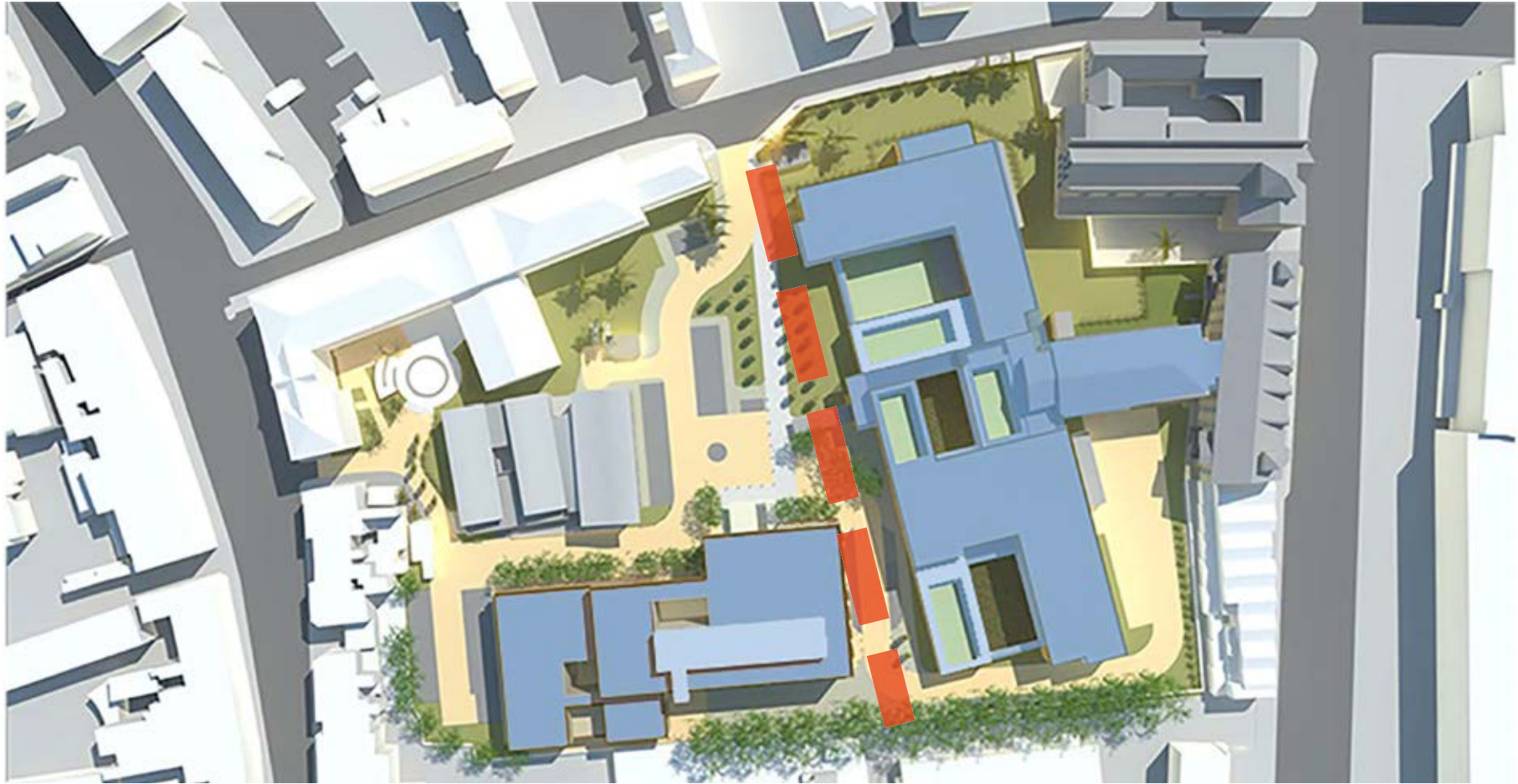
2008



2008



2008







2008



2011



**Joint Strategic Needs Assessment
and joint health and wellbeing
strategies explained**

Commissioning for populations

2012



Health and Social Care Act 2012

CHAPTER 7

Explanatory Notes have been produced to assist in the
understanding of this Act and are available separately

£44.75

2013



Clinical Commissioning Group



2012

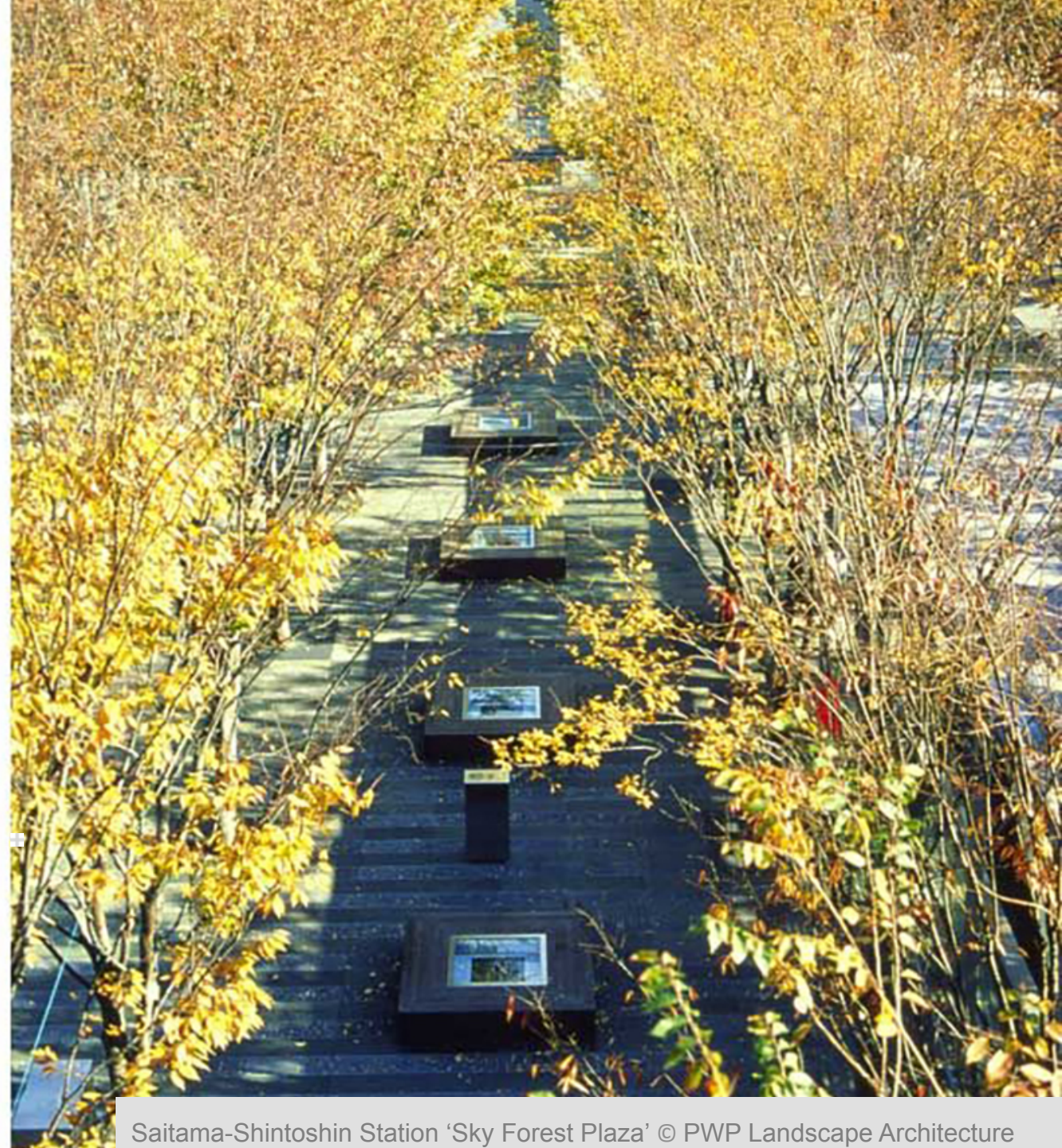


2012



2012





Saitama-Shintoshin Station 'Sky Forest Plaza' © PWP Landscape Architecture

2012



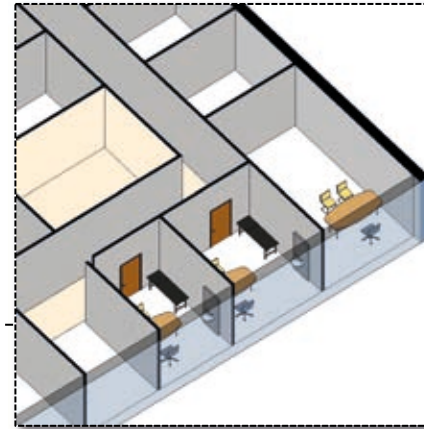
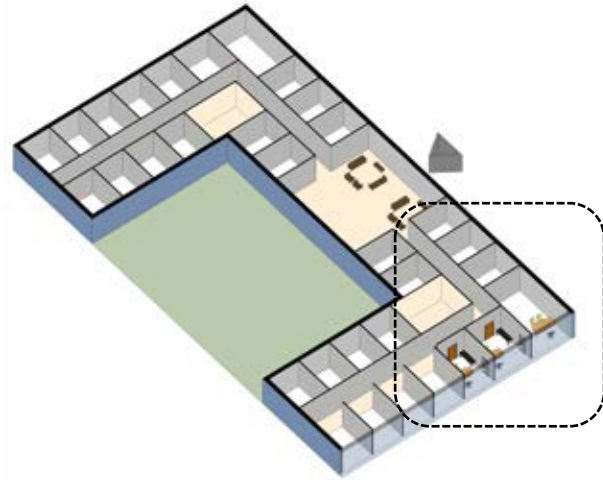
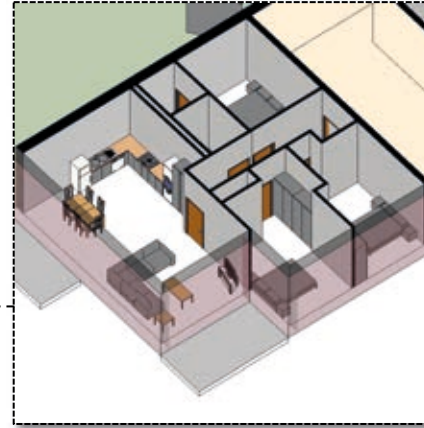
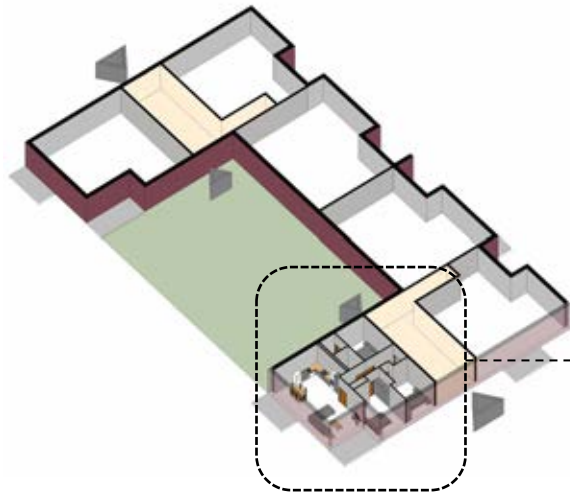
Honoré van Rijswijk www.collectiveurbanstrategies.com



2012

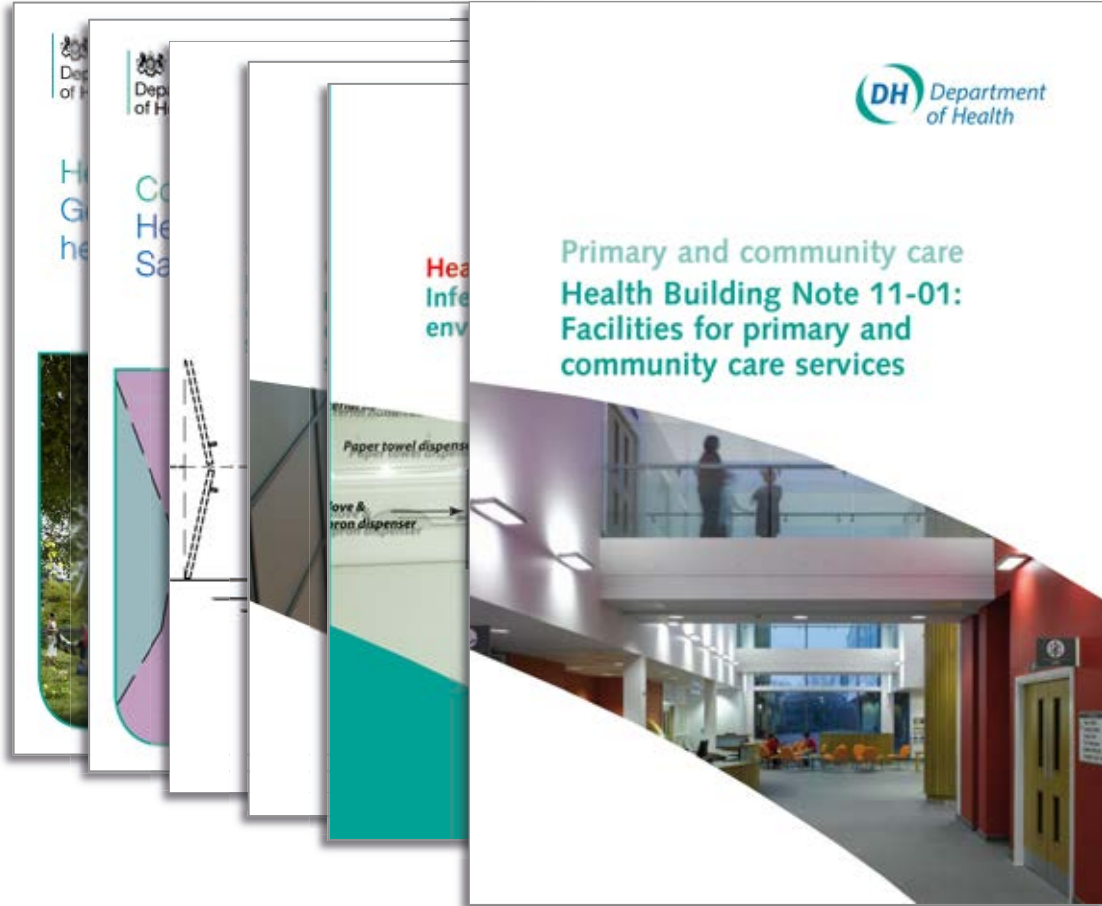


2012



2013

2018



Primary and community care
Health Building Note 11-01:
Facilities for primary and
community care services

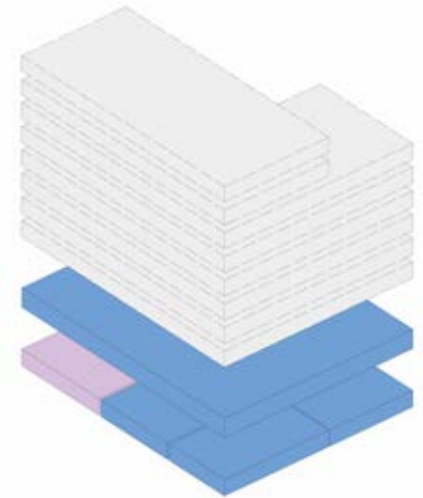


2018



A screenshot of a complex table with multiple columns and rows, likely representing a schedule of accommodation. The table has a header row with yellow background and several data rows with alternating yellow and white backgrounds. The text is small and difficult to read, but it appears to be a detailed schedule.

Schedule of accommodation



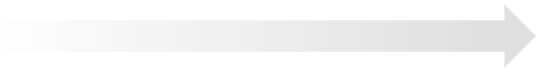
Shell Space



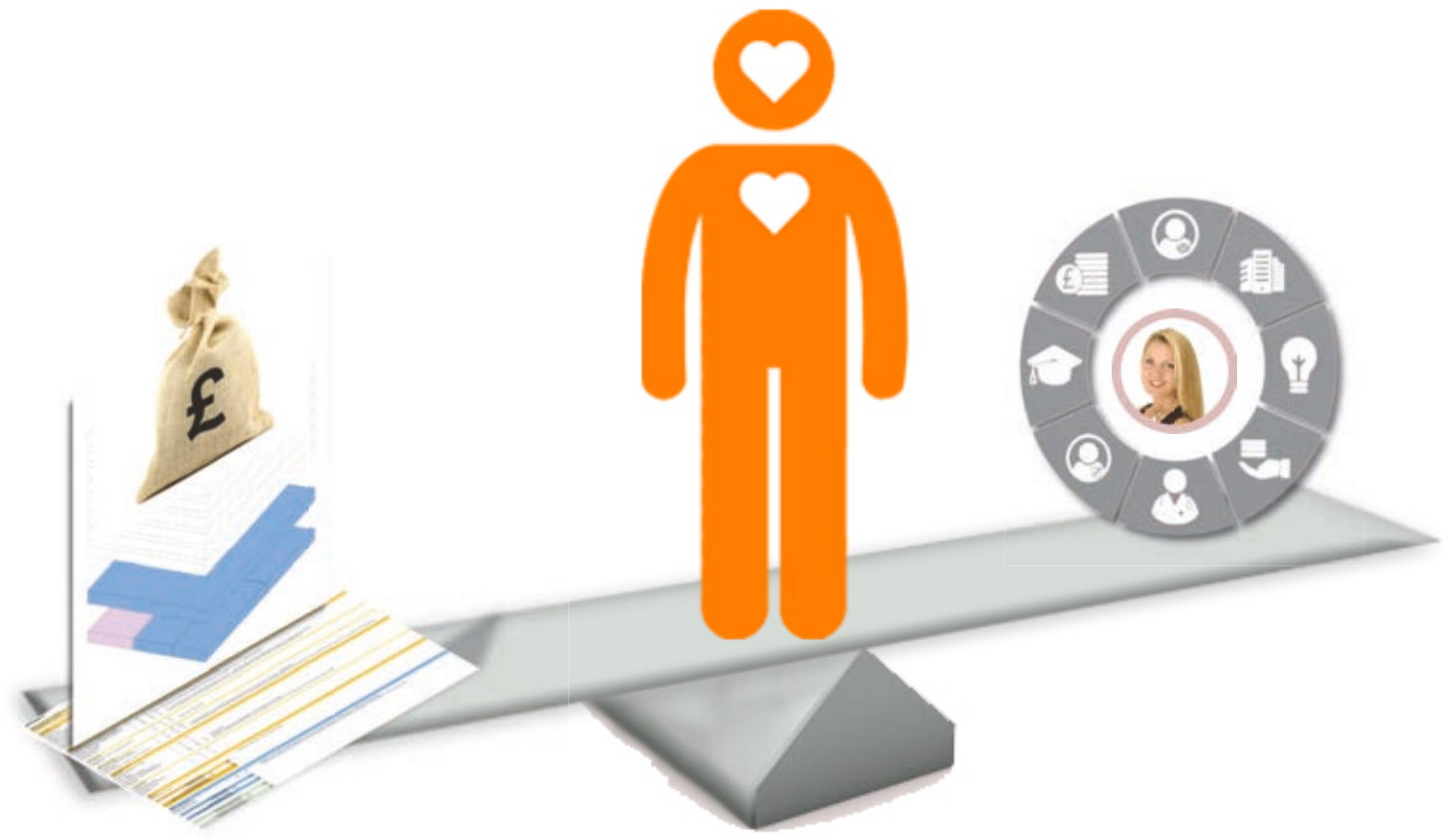
Budget

2014



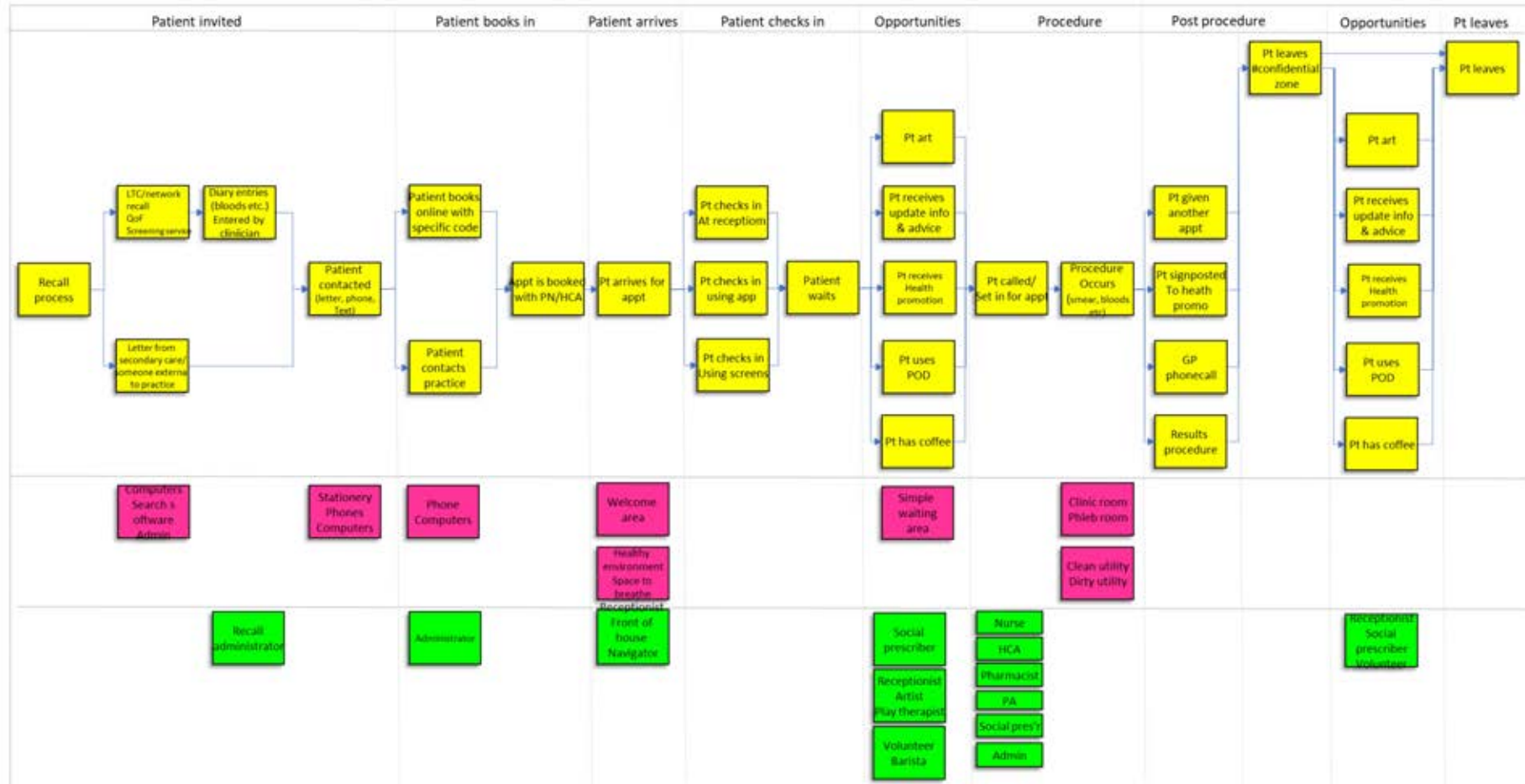


2018



2018

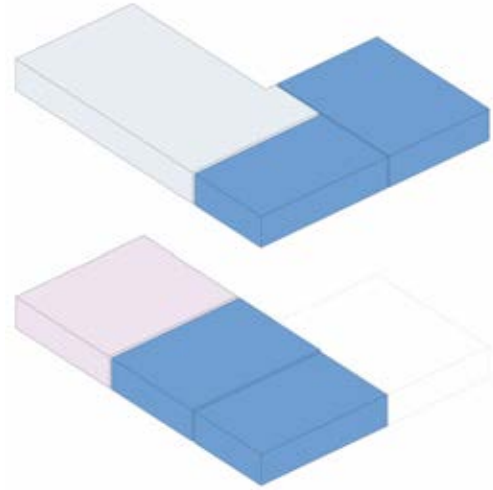




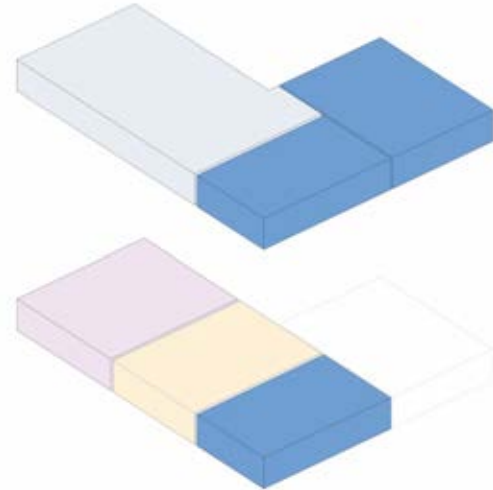


2018

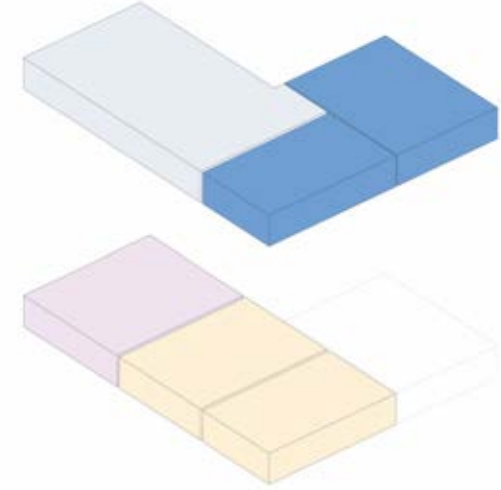




16 consult exam rooms



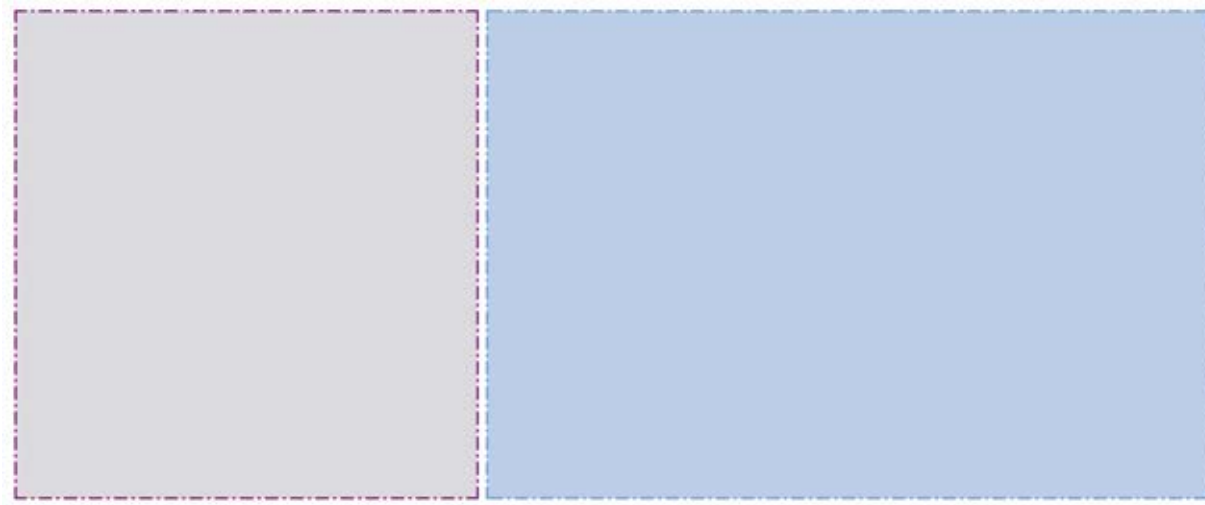
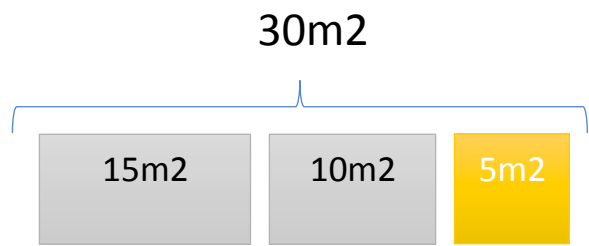
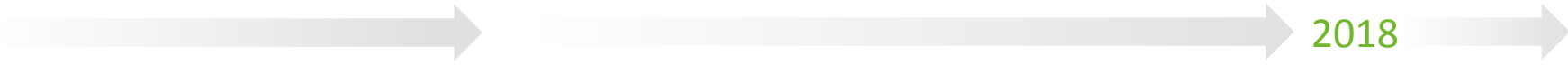
12 consult exam rooms



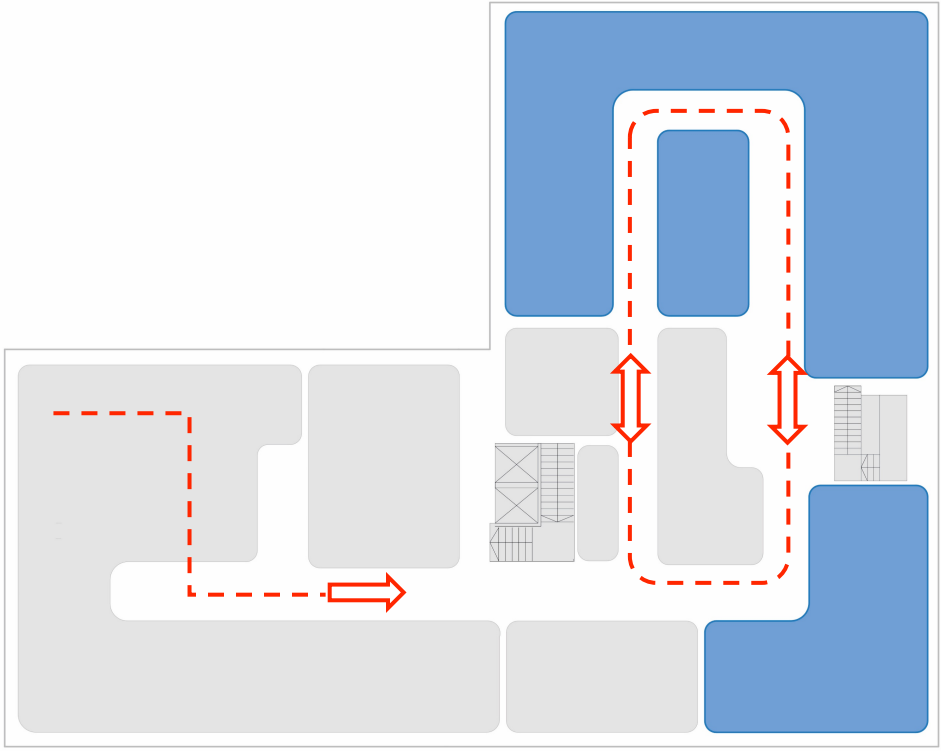
8 consult exam rooms

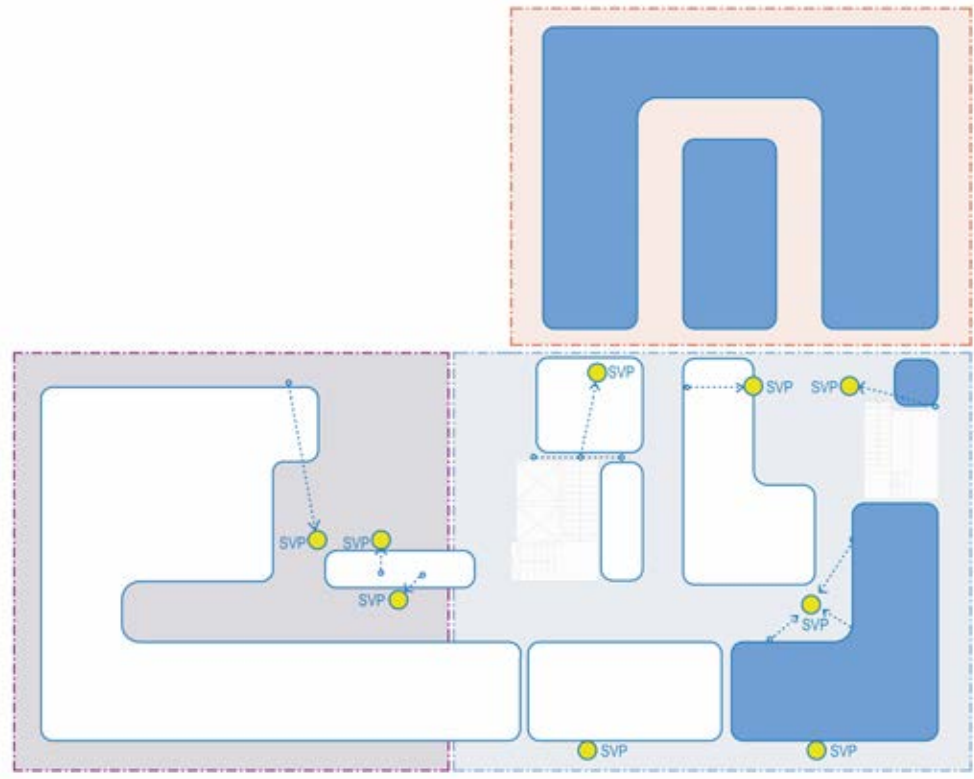
2018

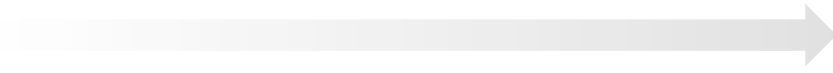




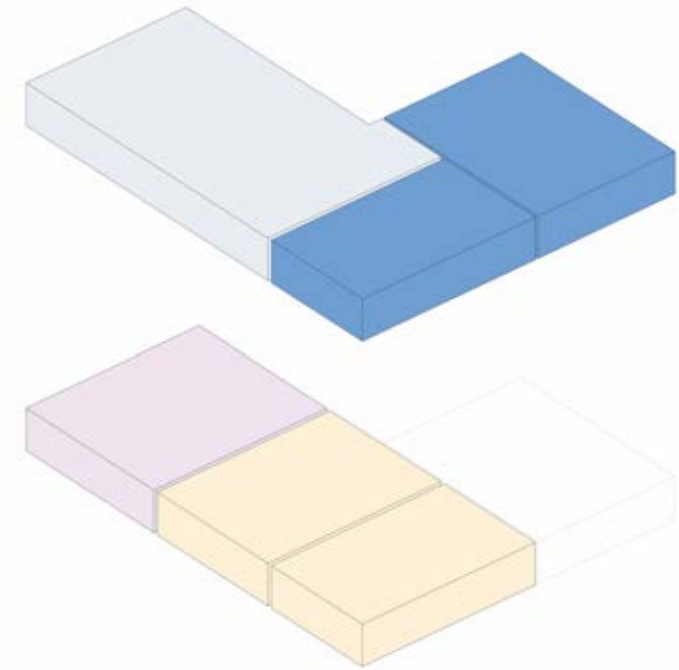
→ → 2018 →



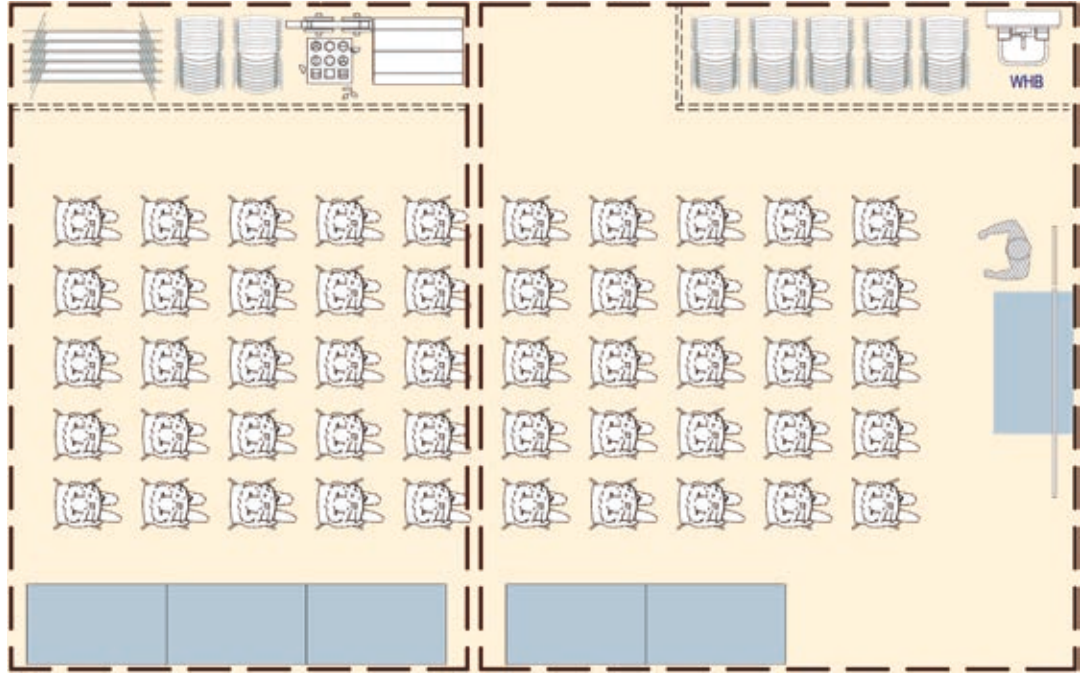




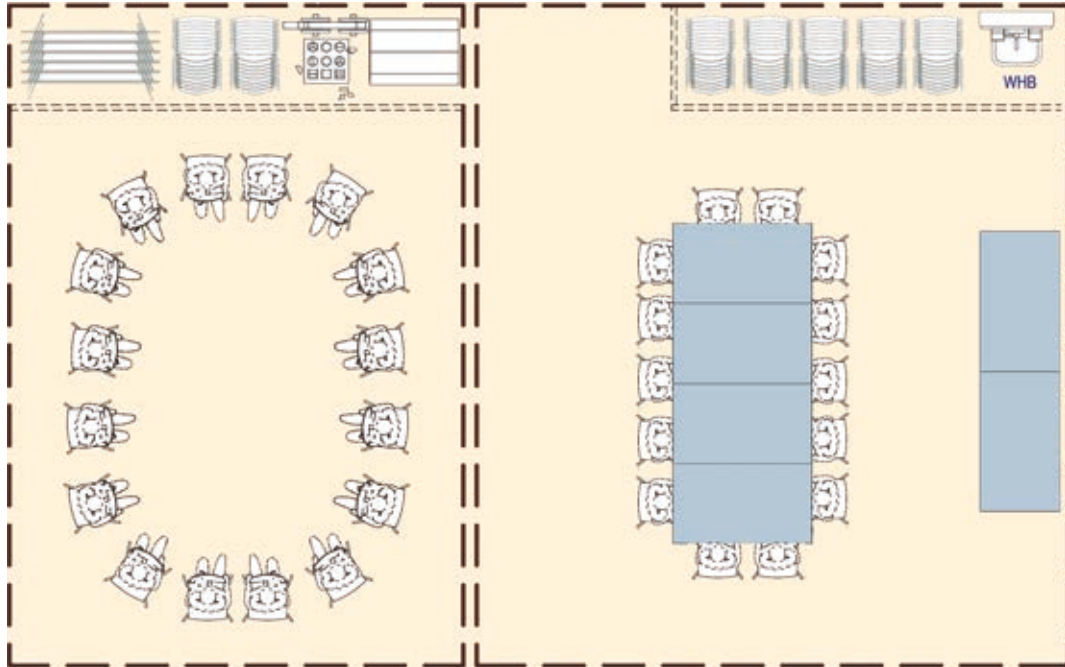
2018

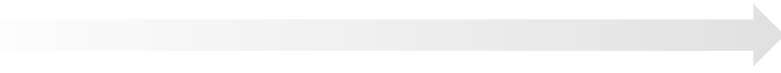


→ 2018 →

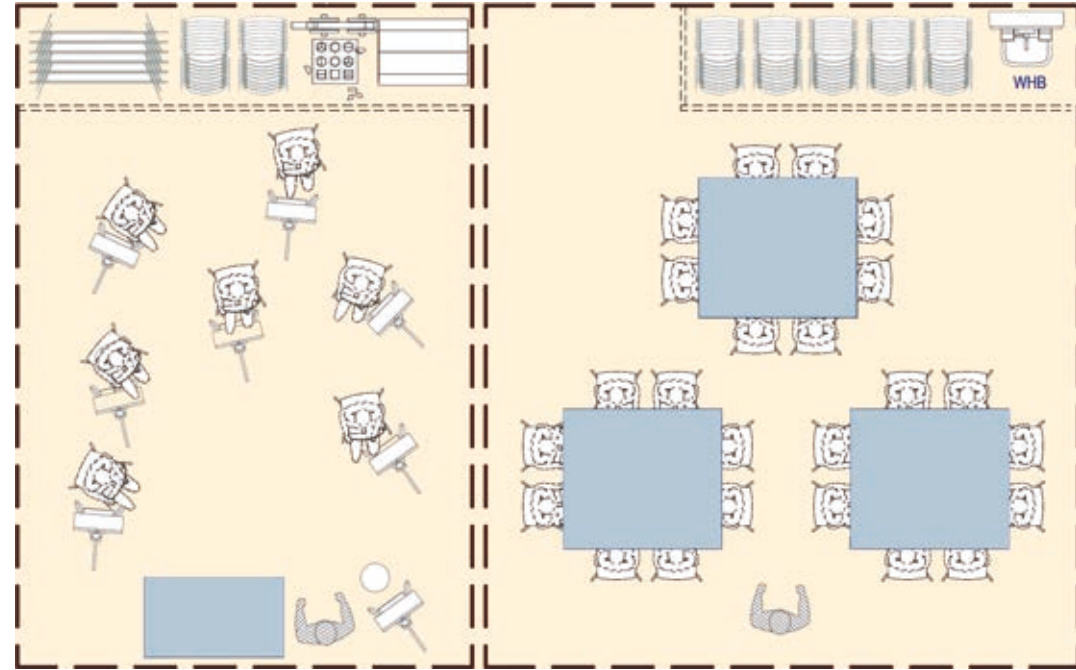


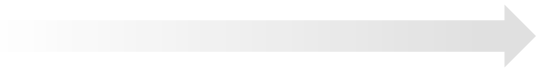
→ 2018 →



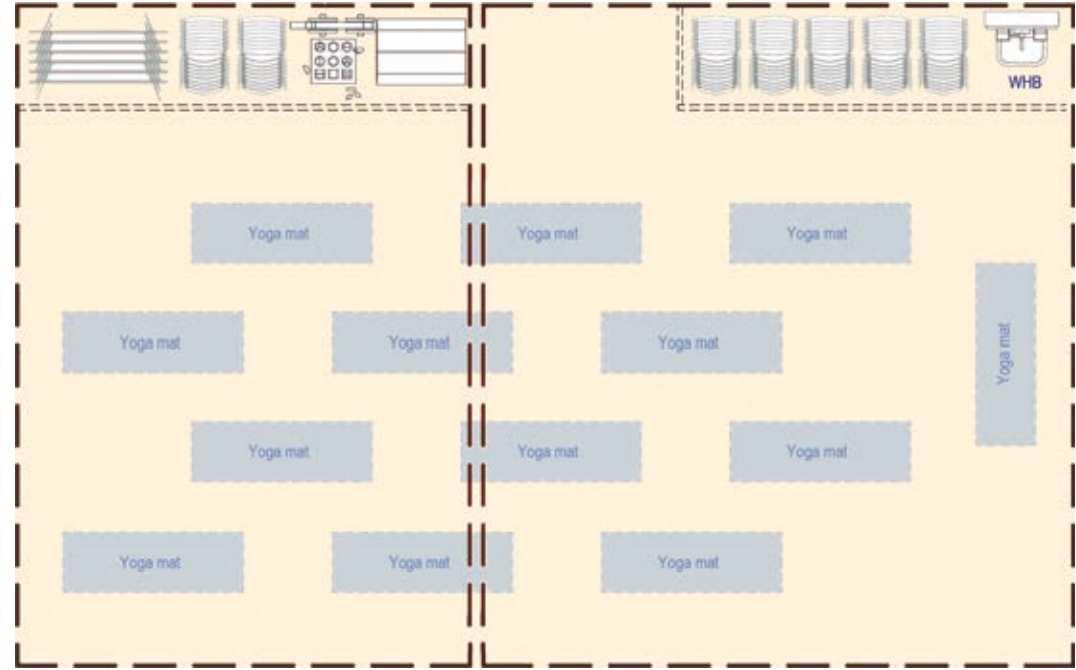


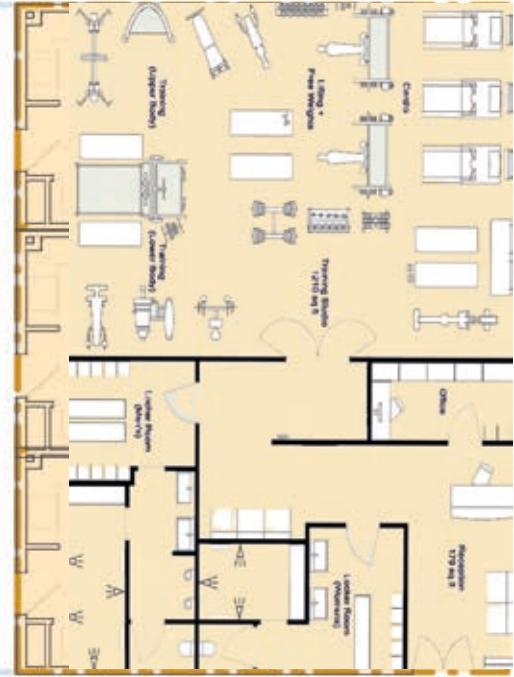
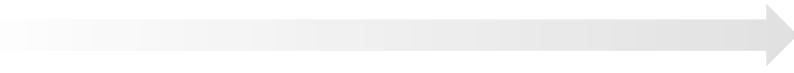
2018

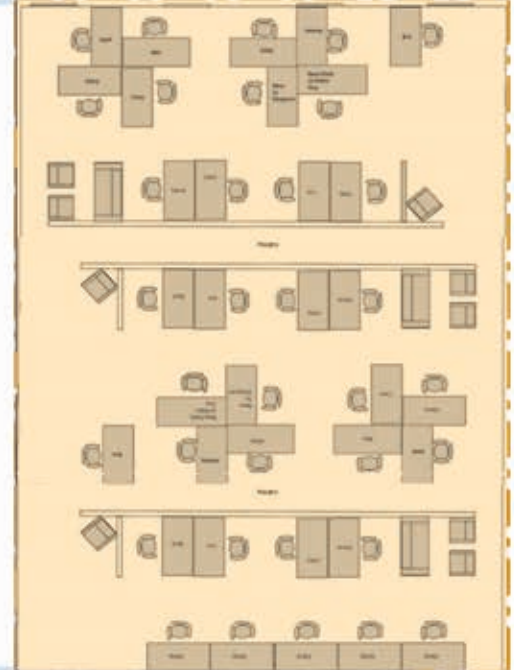
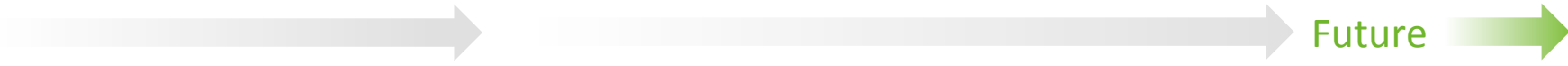


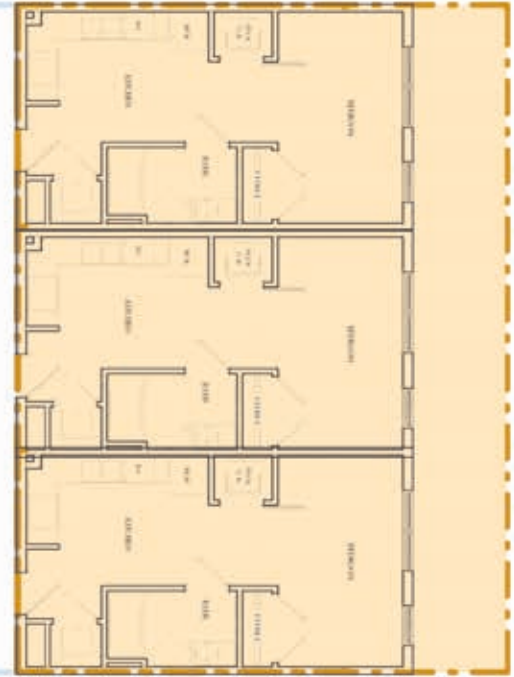
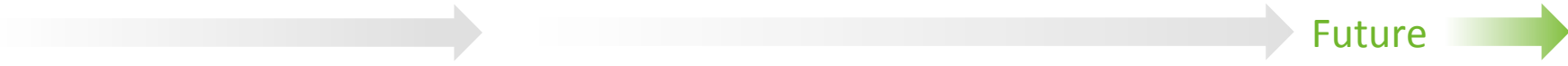


2018

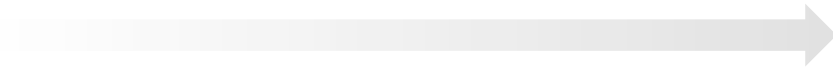






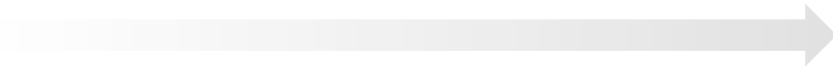






2018



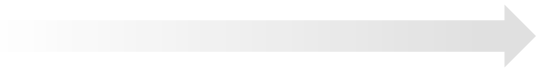


2018



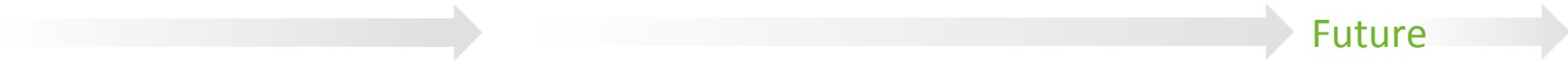
2018





2018







Future

